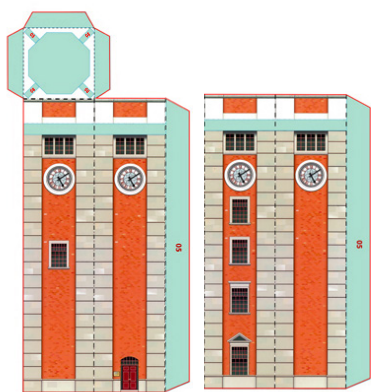


# 尖沙咀鐘樓紙模型製作步驟 How to Build a Paper Model of Tsim Sha Tsui Clock Tower

(建議使用不少於210磅厚度較硬挺的卡紙編印紙模型 Please print the paper model with cardboards no less than 210gsm)

1

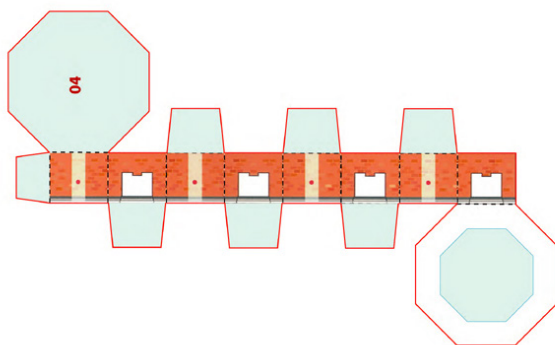


✂ 05

先剪下鐘樓主體，沿虛線摺成柱狀，把貼邊黏好。  
Start with cutting out the main tower. Fold along the dotted lines, and glue the flaps to form the main tower.



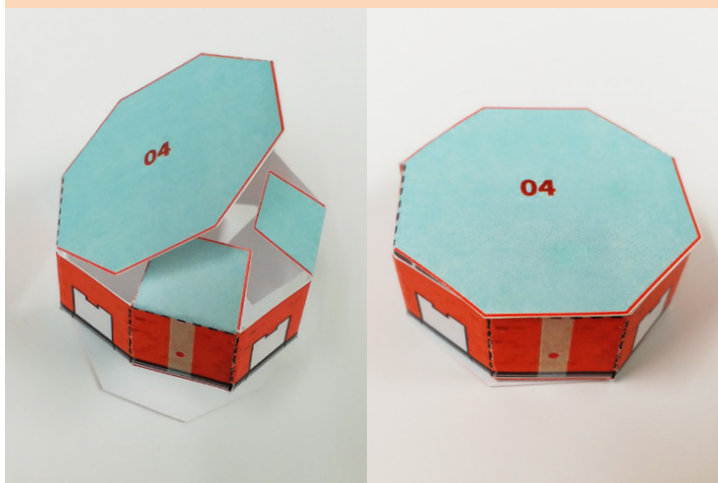
2



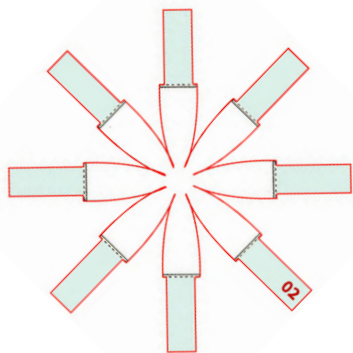
✂ 04

剪下八角形的鐘塔基座，摺成八角柱體後黏好，再貼上鐘樓主體頂部。留意白色牆飾須與鐘面方向相同。

Cut out the octagonal belfry base. Fold carefully and glue the flaps to form an octagonal prism. Glue the prism to the top of the main tower. Make sure the wall decorations in white are on the same side as the clocks.

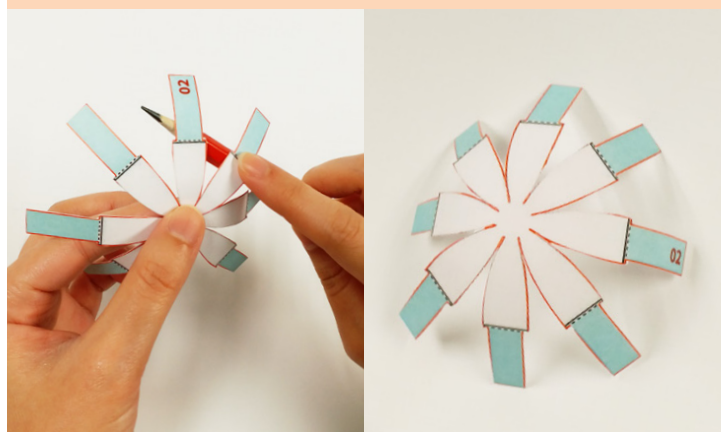


3

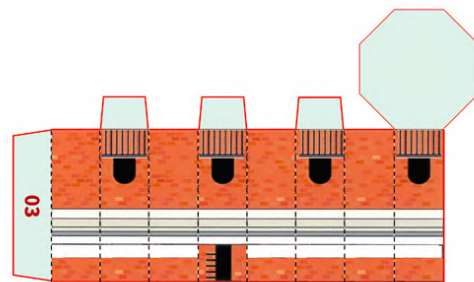


✂ 02

剪下拱頂，紙條用鉛筆稍微捲曲成蓮花狀。  
Cut out the dome and roll the stripes lightly with a pencil to form a dome shape.



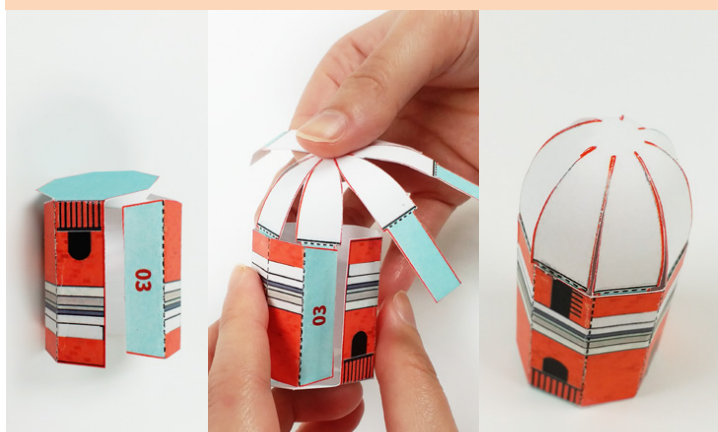
4



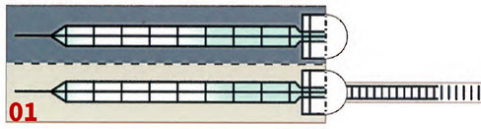
✂ 03

剪下八角形鐘塔摺好，把拱頂放進鐘塔，再把八條貼邊黏好。完成後整個貼上主體頂部。

Cut out the octagonal belfry and fold. Tuck the dome into the belfry, and glue the eight flaps to the interior of the belfry. Glue the whole part to the top of the main tower.

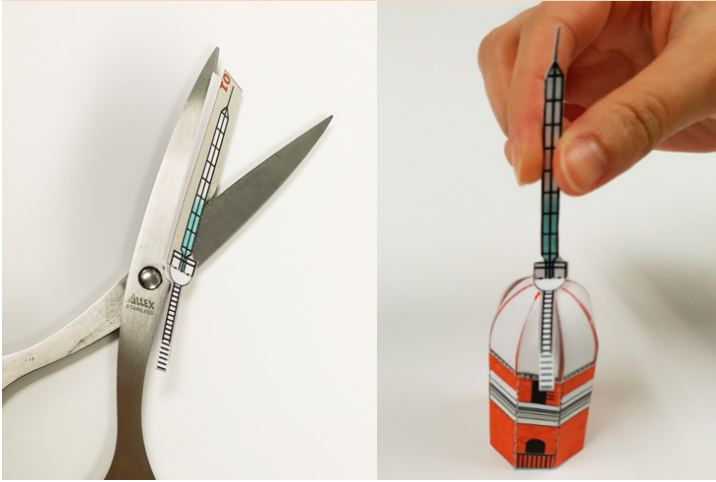


5

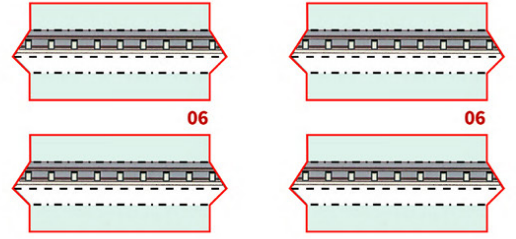


✂ 01

先把避雷針連框剪出，對摺後剪去多餘部分，然後黏好。避雷針底半圓形部分貼上拱頂頂部，留意貓梯須對準鐘樓正面。  
Cut out the rectangular frame containing the lightning rod. Fold along the dotted line, cut out the lightning rod carefully, and glue both sides together. Glue the small semi-circles under the rod to the dome. Make sure the cat ladder is on the facade of the main tower.



6

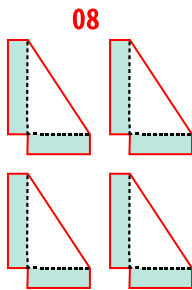


✂ 06

剪下四條飾邊，摺成三角柱體，貼在鐘樓主體第六層上方。留意有紋條的一面朝下。  
Cut out the decorative mouldings and fold them into triangular prisms. Glue them to the sides of the main tower above the sixth floor. Make sure the decoration faces down.



7

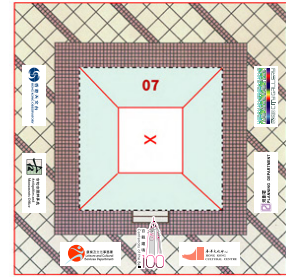


✂ 08

剪下三角形裝飾，分別貼在鐘樓主體頂部的四個角落。留意對準牆身的紅點位置。  
Cut out the triangular decorations, and glue them to the corners on the top of the main tower precisely at the red dot position on the wall.



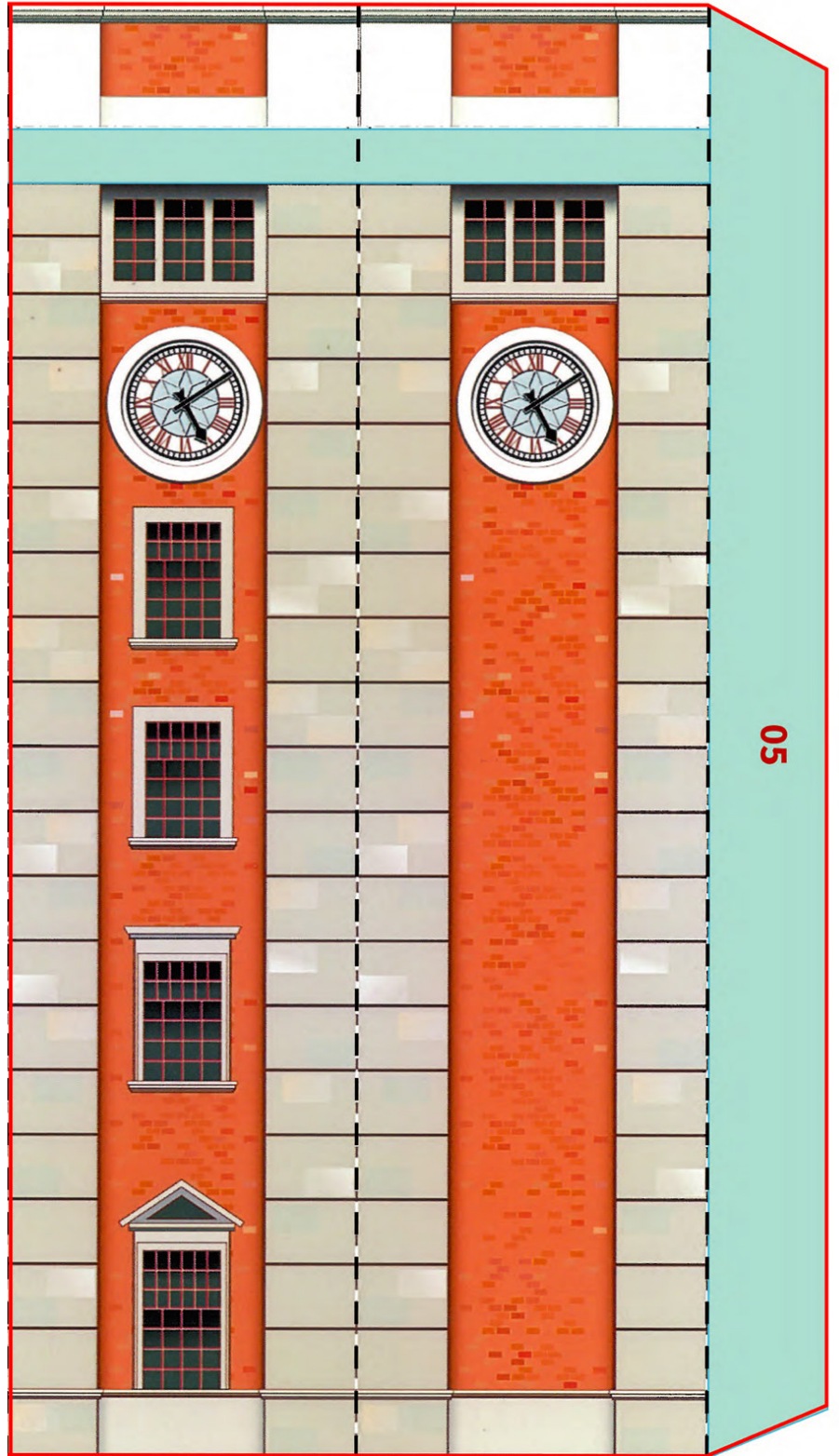
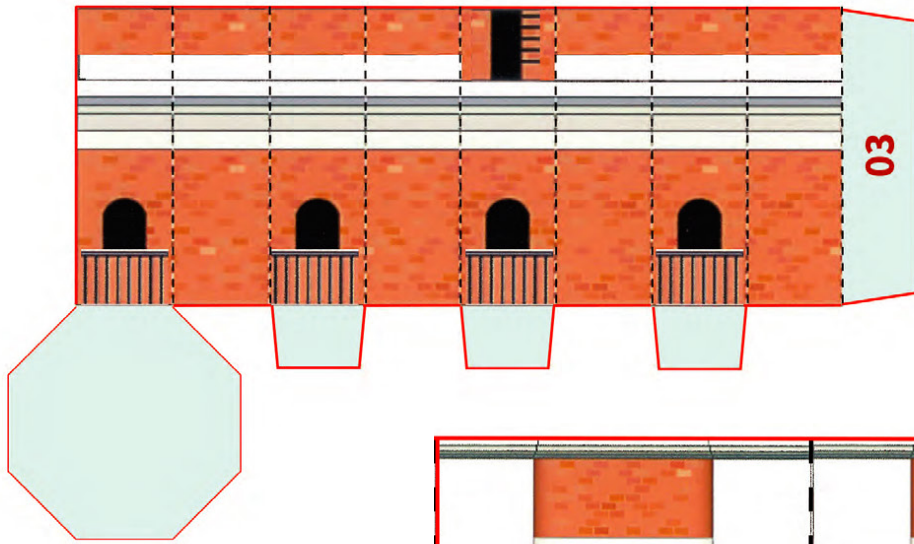
8

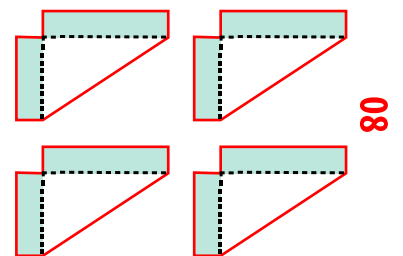
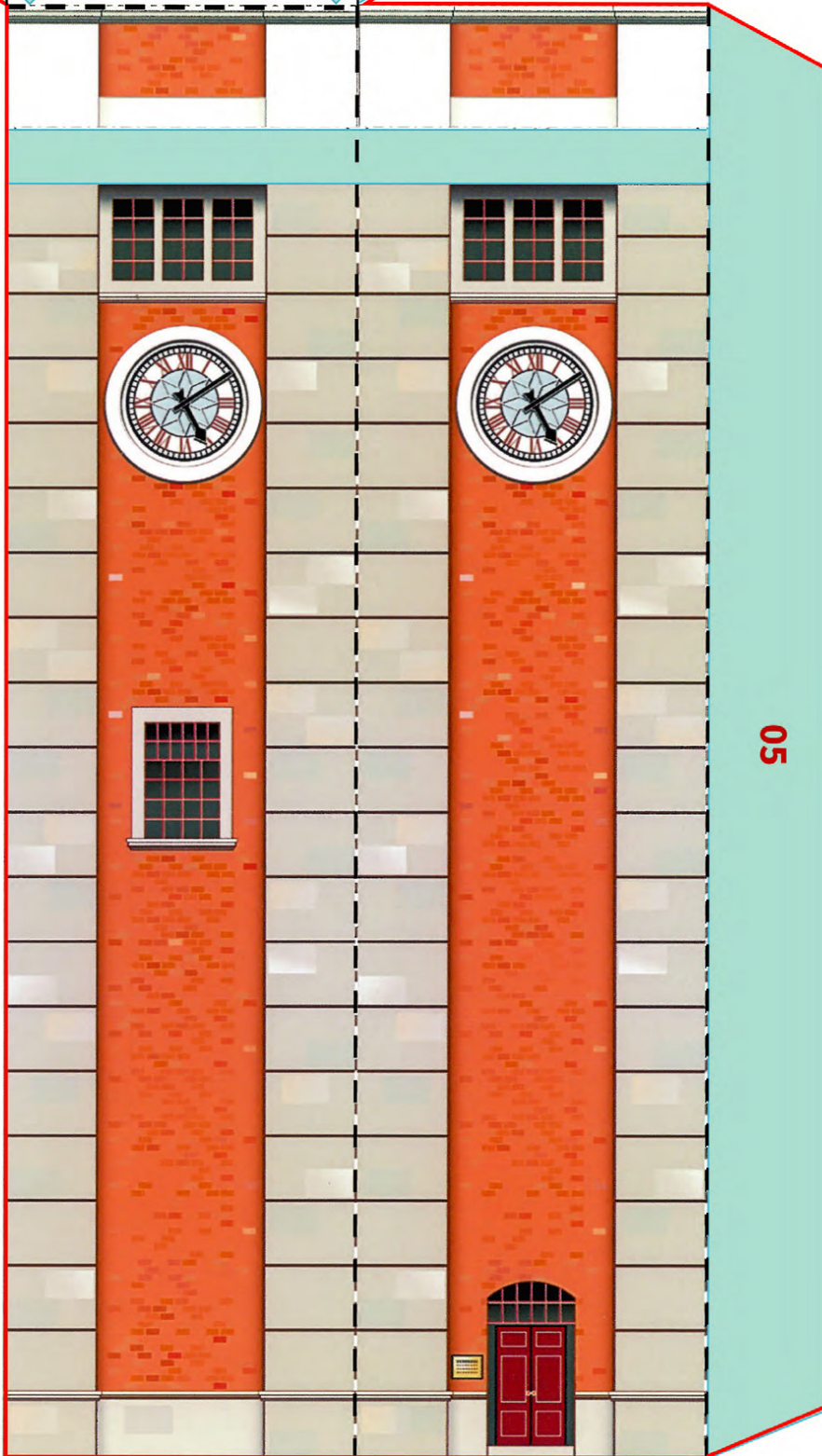
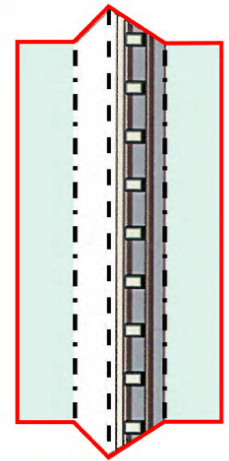
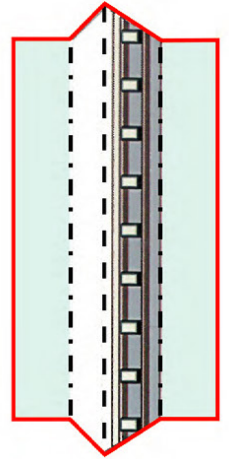
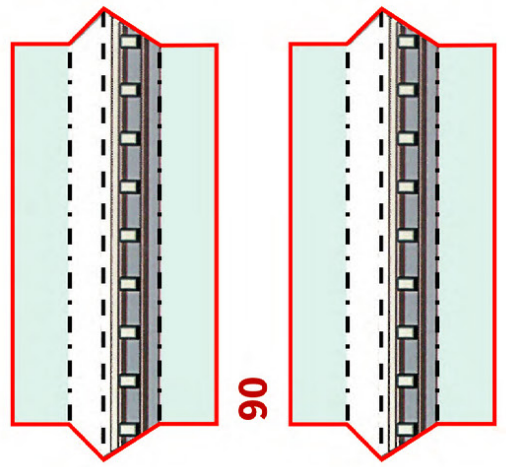
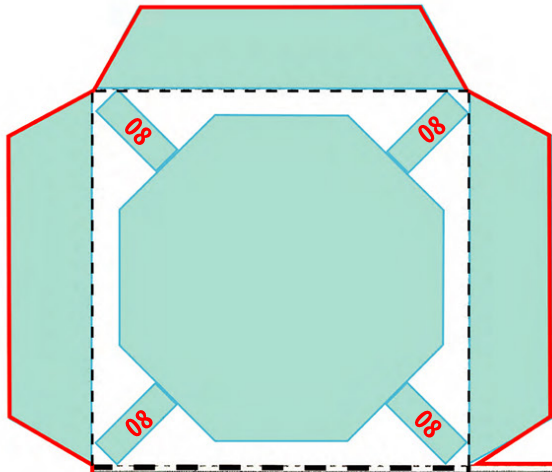


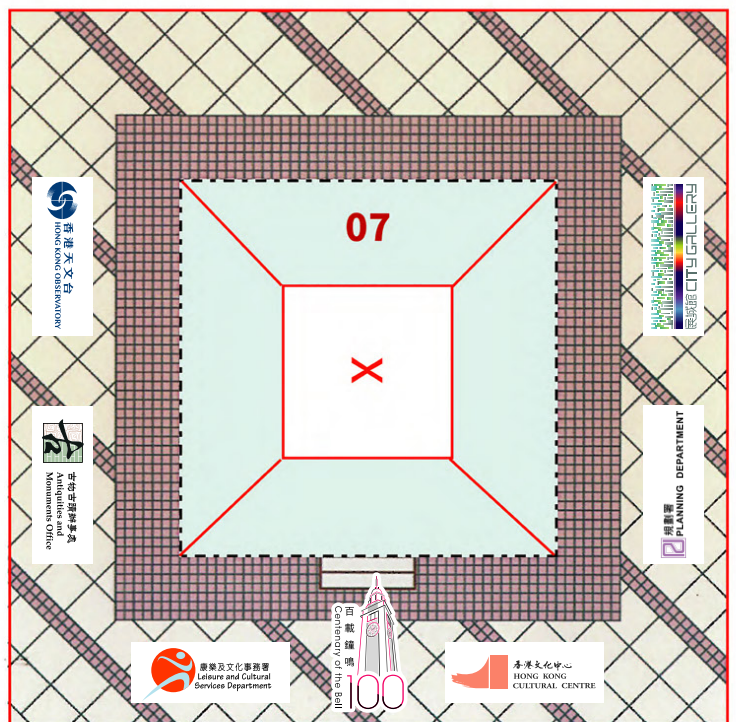
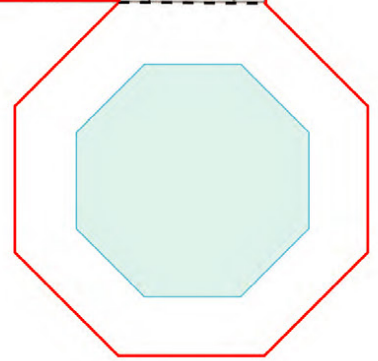
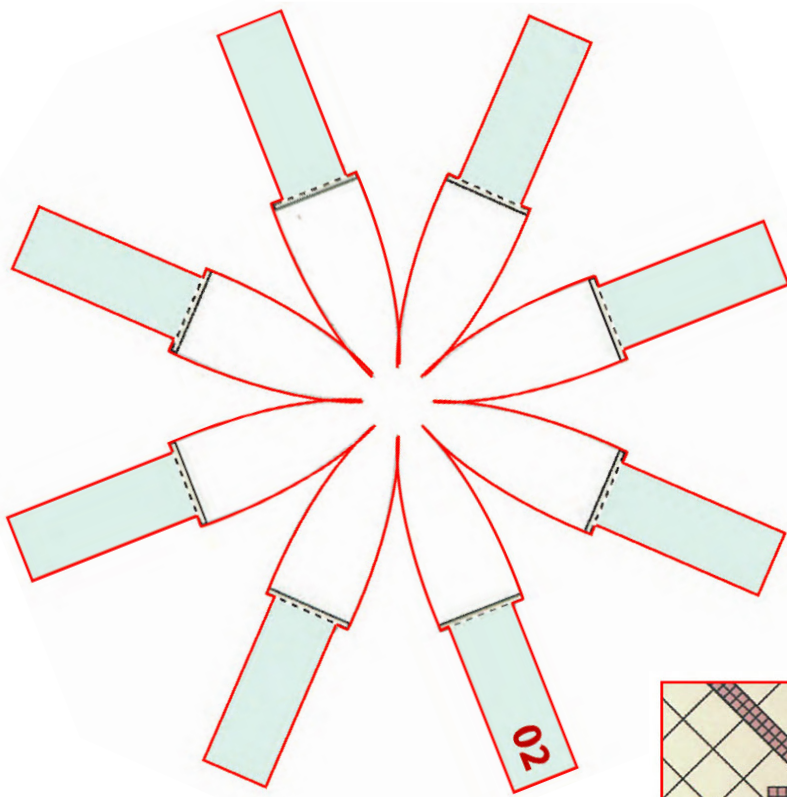
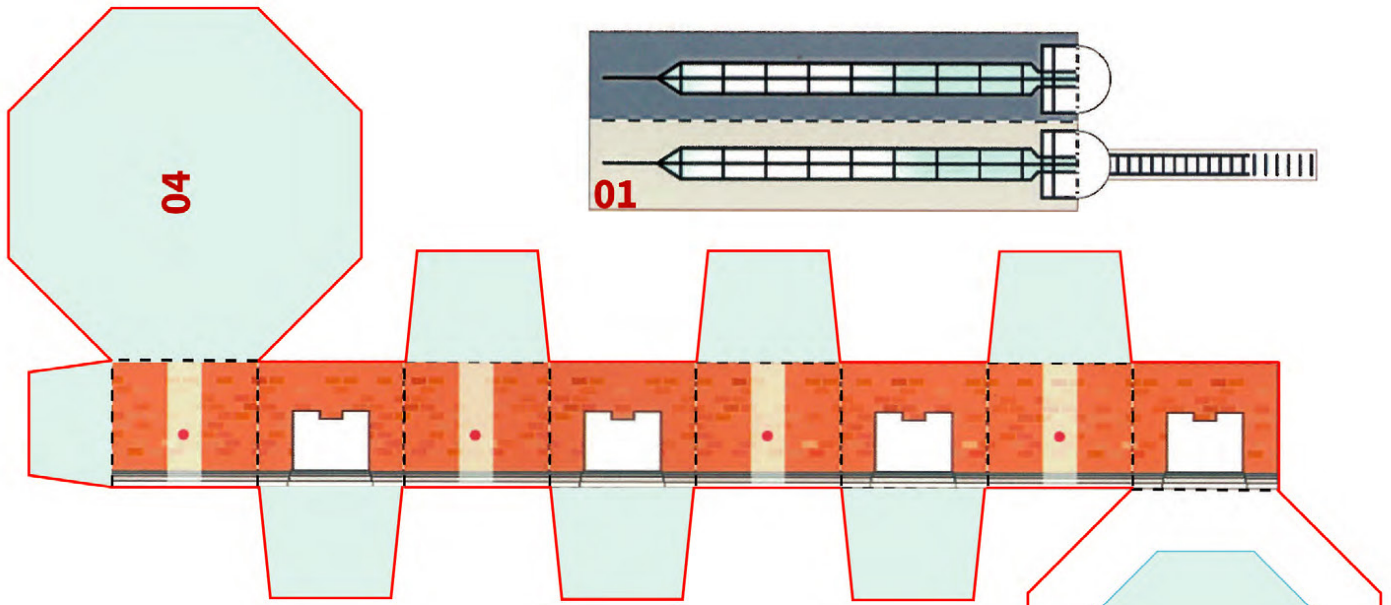
✂ 07

最後加上底座。先輕輕屈曲底座，用剪刀刀尖在白色正方形中央刺出小洞，再沿紅線剪掉白色部分。最後把梯形貼邊貼在鐘樓主體內側。  
Complete the paper model by adding a base. Slightly bend the paper. Use the tip of a scissors blade to cut a small hole in the centre of the white square, and cut out the white part along the red lines. Finally, tuck the trapezium flaps into the main tower and glue them together.









合辦  
Co-organisers

